

LED COMPACT HIGH-BAY

INDUSTRY LIGHTING



LED COMPACT HIGH-BAY

Industry lighting

The use of state-of-the-art LED technology in conventional industry lighting provides a lot of advantages like an optimal light distribution and an increased lifetime all at an affordable price. The LED Compact High-bay is fully compatible with existing conventional lighting infrastructure, and are the perfect choice for both new and replacement markets.

■ LED COMPACT HIGH-BAY

- Incl. integrated LED driver
- High efficiency of up to 160 lm/W
- High colour rendering index CRI: ≥ 80
- Easy installation due to plug and play solution

DALI



IP65

IK08

LED Compact High-bay

- 100 % INSTANT LIGHT
- INTEGRATED LED DRIVER
- HIGH SYSTEM EFFICIENCY: UP TO 160 LM/W
- LONG SERVICE LIFE TIME:
> 60,000 hrs. (L90/B10)
- 5 YEARS GUARANTEE

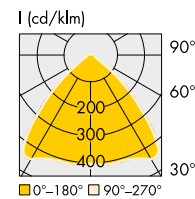
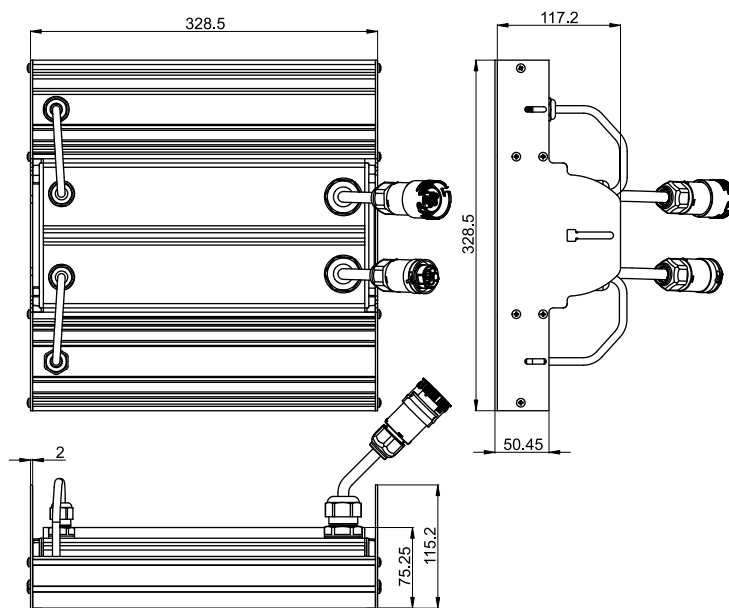
LED Compact High-bay

Dimension (LxVxH): 328x328x117 mm
 Casing colour: aluminium. anodized
 Endcap/fixation bracket colour: grey (RAL 9022)
 Degree of protection: IP65
 Impact rating: IK08
 Typ. colour accuracy initially: 3 SDCM
 With connectors for power supply and through-wiring, incl. connector end caps and ceiling mounting bracket with screws

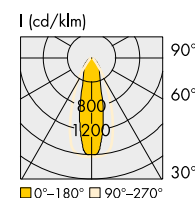


Applied standards

- EN 60598-1:2015
- EN 60598-2-2:1989
- EN 62471:2008
- EN 62493:2010
- EN 55015:2013
- EN 61000-3-2:2014
- EN 61000-3-3:2013
- EN 61547:2009



Wide 90°



High Rack

Electrical characteristics

Type	Voltage AC 50-60 Hz V	Power factor	Ripple 100 Hz %	THD at full load % (230 V)
VS-L0115-100-xxx-xx-DA	220-240	> 0.9	< 1	< 20
VS-L0115-100-xxx-xx	220-240	> 0.9	< 3	< 10
VS-L0115-70-xxx-xx	220-240	> 0.9	< 3	< 10

Maximum ratings

Exceeding the maximum ratings can lead to reduction of service life or destruction of the luminaire.

Type	Allowed voltage range V	Ambient temperature range (t _a) °C min.	°C max.	Storage temperature range °C min.	°C max.
All types	198-264	-10	+40	-20	+60

Operating life

in hrs.

Type	L90/B10 t _a = 25 °C	t _a = 40 °C	L80/B10 t _a = 25 °C	t _a = 40 °C	L70/B10 t _a = 25 °C	t _a = 40 °C
VS-L0115-100-xxx-xx-DA	60,000	50,000	60,000	50,000	60,000	50,000
VS-L0115-100-xxx-xx	60,000	50,000	60,000	50,000	60,000	50,000
VS-L0115-70-xxx-xx	60,000	60,000	60,000	60,000	60,000	60,000

The values contained in this data sheet can change due to technical innovations. Any such changes will be made without separate notification.

Optical Characteristics

at $t_a = 25^\circ\text{C}$

Type	Ref. No.	Colour	Correlated colour temperature K	Typ. power consumption* W	Typ. luminous flux* and efficiency		Beam angle °	Typ. CRI R _a	Energy efficiency
Beam angle: 90°									
VS-L0115-100-840-90-CM-DA	568130	neutral white	4000	98	13300	140	90	80	A++
VS-L0115-100-840-90-CM	568342	neutral white	4000	98	13300	140	90	80	A++
VS-L0115-70-840-90-CM	568343	neutral white	4000	67	9600	148	90	80	A++
VS-L0115-100-850-90-CM-DA	568346	cool white	5000	98	13500	142	90	80	A++
VS-L0115-100-850-90-CM	568347	cool white	5000	98	13500	142	90	80	A++
VS-L0115-70-850-90-CM	568348	cool white	5000	67	9800	151	90	80	A++
Beam angle: HighRack									
VS-L0115-100-840-HR-CM-DA	568227	neutral white	4000	98	13330	140	HighRack	80	A++
VS-L0115-100-840-HR-CM	568344	neutral white	4000	98	13330	140	HighRack	80	A++
VS-L0115-70-840-HR-CM	568345	neutral white	4000	67	9600	148	HighRack	80	A++
VS-L0115-100-850-HR-CM-DA	568349	cool white	5000	98	13500	142	HighRack	80	A++
VS-L0115-100-850-HR-CM	568350	cool white	5000	98	13500	142	HighRack	80	A++
VS-L0115-70-850-HR-CM	568351	cool white	5000	67	9800	151	HighRack	80	A++

* Production tolerance of luminous flux and power consumption: $\pm 10\%$

Logistic details

Type	Packaging dimensions LxWxH (mm)	Packaging unit / weight pcs. kg		Minimum order quantity / Pieces per euro pallet pcs.
100 W-DA	330x330x120	1	5.55	66
100 W	330x330x120	1	5.55	66
70 W	330x330x120	1	5.55	66

The values contained in this data sheet can change due to technical innovations. Any such changes will be made without separate notification.

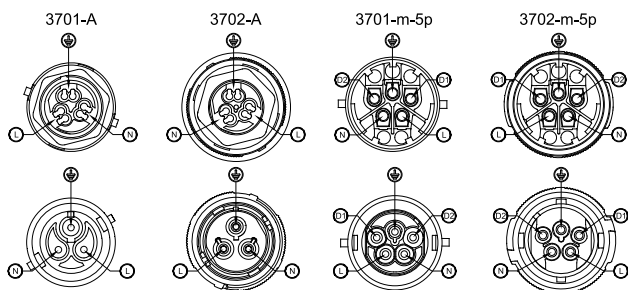
Safety functions of LED drivers (70 W/100 W)

- Transient mains peaks protection:
Values are in compliance with EN 61547 (interference immunity).
Surges between L-N: up to 2 kV
Surges between L/N-PE: up to 4 kV
- Short-circuit protection: The control gear is protected against permanent short-circuit with automatic restart function.
- Overload protection: The control gear only works in range of rated output power and voltage problemfree.
Please check before switch-on mains power supply that the selected LED load is suitable.
- No load operation: The control gear is protected against no load operation (open load).
- If any of the above mentioned safety functions will be triggered, disconnect the control gear from the power supply then find and eliminate the cause of the problem.

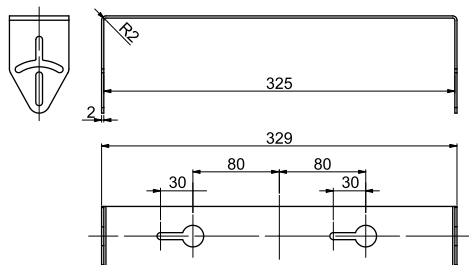
Electrical installation

- Connection terminals: Push-in terminals for rigid or flexible conductors with a section of 2.5 mm²
- Stripped length: 8 mm
- Polarity: Please ensure the correct polarity of the leads prior to commissioning.

Connector pin definition



Fixing bracket for ceiling mounting



Selection of automatic cut-outs for VS LED drivers

- Dimensioning automatic cut-outs
High transient currents occur when an LED driver is switched on because the capacitors have to load. Ignition of LED modules occurs almost simultaneously. This also causes a simultaneous high demand for power. These high currents when the system is switched on put a strain on the automatic conductor cut-outs, which must be selected and dimensioned to suit.
- Release reaction
The release reaction of the automatic conductor cut-outs comply with VDE 0641, part 11, for B, C characteristics. The values shown in the following tables are for guidance purposes only and are subject to system-dependent change.
- No. of LED drivers
The maximum number of VS LED drivers applies to cases where the devices are switched on simultaneously. Specifications apply to single-pole fuses. The number of permissible drivers must be reduced by 20% for multi-pole fuses. The considered circuit impedance equals 400 mΩ (approx. 20 m [2.5 mm²] of conductor from the power supply to the distributor and a further 15 m to the luminaire).

Type	Automatic cut-out type and possible no. of VS drivers pcs.					
Automatic cut-out type	B 10 A	B 13 A	B 16 A	C 10 A	C 13 A	C 16 A
VS-L0115-xxx-70W	5	7	9	9	12	15
VS-L0115-xxx-100W	5	7	9	9	12	15
VS-L0115-xxx-100W-DA	9	11	14	15	19	24

- To limit capacitive inrush currents the current carrying capacity of each circuit breaker (fuse) can be increased by a factor of 2.5 with the help of our ESB (Ref. No.: 149820, 149821, 149822) inrush current limiters.

The values contained in this data sheet can change due to technical innovations. Any such changes will be made without separate notification.

Safety and Installation Instructions

General safety and installation Instructions for luminaires

The following instructions must be observed. Non-observance can result in personal injury and damage to property or can damage both luminaires and control gear. In such cases, the manufacturer's warranty as well as liability will be invalidated.

General Instructions

- Please read these instructions prior to installation/commissioning and keep them safe for future use.
- Any improper use or modification will invalidate the manufacturer's warranty and liability as well as any warranty claims.
- The luminaire contains integrated and non-exchangeable LED light sources. The light source of this luminaire cannot be replaced. When the light source has reached the end of its service life, the entire luminaire must be replaced.
- Care must be taken to ensure the luminaire is operated only using the supplied Vossloh-Schwabe control gear and accessories or using an alternative brand of approved control gear.
- If the luminaire is marked with SELV, only control gear with SELV characteristics may be used.
- Children must be prevented from playing with or near the luminaire.

Installation and operating instructions

- Installation of this luminaire may be undertaken only by authorised and suitably trained staff in accordance with any country-specific regulations.
- Installation must be carried out only after disconnecting the device from mains voltage, i.e. in a voltage-free state.
- Depending on the site of operation, the degree of protection (IPxx) will have to be observed during installation.
- Please ensure that the correct supply voltage is applied by checking it against the voltage requirements of the luminaire and the driver.
- For the purpose of commissioning, please ensure the correct polarity of the connecting leads. Incorrect polarity can destroy the modules.
- For trouble-free operation, it is important to ensure that the permissible ambient temperature range (t_a) as stipulated in the datasheet is not exceeded. Exposure to sunlight can increase the ambient temperature.
- Only ever operate the luminaire with all protective covers in place.
- Given functional problems, please contact your Vossloh-Schwabe representative. Should the power supply cable be damaged, please scrap the luminaire and/or contact your VS representative.
- On contact with moisture or condensation, any resulting corrosive damage will not be recognised as a product flaw or manufacturer's defect.
- Connecting luminaires (LED modules) to supply units that are already connected to the mains can result in long-term damage. Secondary switching is not permissible.
- Touchable luminaire parts can reach high temperatures (risk of burning/injury.)
- Highly flammable materials (e.g. cladding or insulation material) must be kept away from the luminaire.

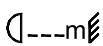
- Please ensure protective ESD (electrostatic discharge) measures are taken when handling and installing the luminaire – see VS "ESD Protection" application notes.

Cleaning instructions

- Depending on the conditions on site, the luminaire must be cleaned on a regular basis.
- Never use any flammable, abrasive, harsh or corrosive cleaning liquids.
- Prior to cleaning the luminaire, please ensure it is disconnected from the mains and is given time to cool down.
- Once it has cooled down, the luminaire can be cleaned with a damp cloth.
- Let the luminaire dry fully before switching it back on.

Answers to technical questions can be found on our website at **www.vossloh-schwabe.com** or ask your Vossloh-Schwabe representative.

Safety symbols

 Specifies the minimum clearance to flammable materials in the direction of radiation.



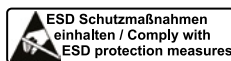
Indoor operation



Please ensure that the way the luminaire is positioned means there is no reason to expect anyone could look into it for a longer period of time with less clearance than stated in the datasheet.



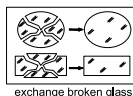
Caution: risk of electric shock.



Caution: components with a risk of electrostatic charge.



Luminaire/voltage supply unit must not be covered with any thermally insulating materials or similar.



Any cover with damage must be replaced.

Product guarantee

- 5 years
 - The conditions for the Product Guarantee of the Vossloh-Schwabe Group shall apply as published on our homepage (www.vossloh-schwabe.com).
- We will be happy to send you these conditions upon request.

The values contained in this data sheet can change due to technical innovations. Any such changes will be made without separate notification.