

# COMPACT OPTICS 2X2 FOR SMD W5 – 3535



## COMPACT OPTICS 2x2 FOR SMD W5 – 3535

The optics made of high-quality optical material are designed for installation in luminaires with a glass cover and can be used for many street lighting applications. For the typical lighting situations of the street a uniform and at the same time glare-free light with low color deviations is possible.

The optics are optimized for high power LEDs with a footprint 3535. Typical 3535 LED types for use with these optics are Nichia NVSx219; Osram Oslon square; Samsung LH351; Seoul Z5M ; Cree XPx, Luxeon Rebel. But also LEDs with a footprint 5050 like the Seoul 5050, Samsung LH502C/508C or Lumileds Luxeon 5050 find place under the optics.



### Compact optics 2x2 for SMD W5 – 3535

- **HIGH QUALITY OPTICAL MATERIAL**
- **OPTICAL EFFICIENCY OF UP TO 96 (WITHOUT FRONT GLASS)**
- **UNIFORM AND AT THE SAME TIME GLARE-FREE LIGHT**
- **LOW COLOR DEVIATIONS**
- **OPTIC SUITABLE FOR ZHAGA-COMPLIANT LIGHT ENGINES**

## Compact optics 2x2 for SMD W5 – 3535

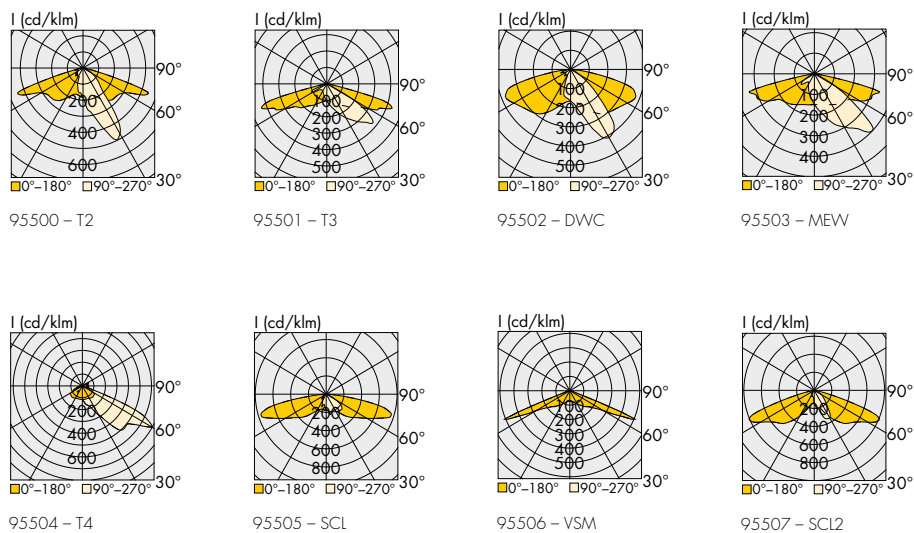
### Technical Notes for Optics

- Material: PMMA
- Dimensions (LxWxH): 50x50 mm
- Fixing hole for M3
- Operating temperature range: – 40 °C to 80 °C
- Max. torque on screws  
M3: 0.5 Nm;



Light distribution	Optics type	Ref. No.	Efficiency %	Weight g	Packaging unit
T2	95500	<b>571855</b>	93	9.3	560
T3	95501	<b>571856</b>	96	6.4	560
DWC	95502	<b>571857</b>	94	9.4	560
MEW	95503	<b>571858</b>	93	8.9	560
T4	95504	<b>571859</b>	94	9.8	560
SCL	95505	<b>571860</b>	94	9.2	560
VSM	95506	<b>571861</b>	94	7.5	560
SCL2	95507	<b>572255</b>	94	9.0	560

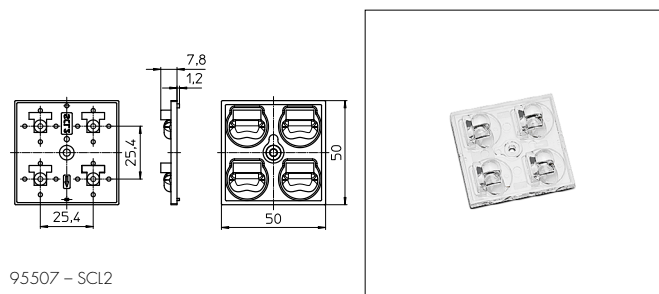
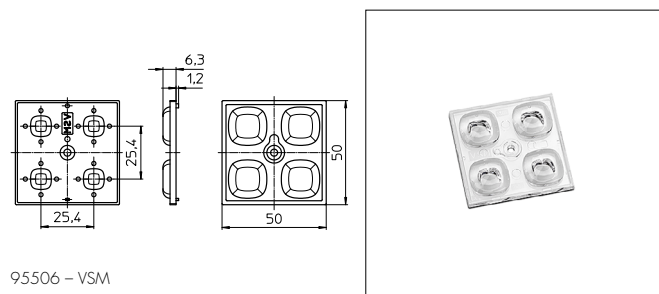
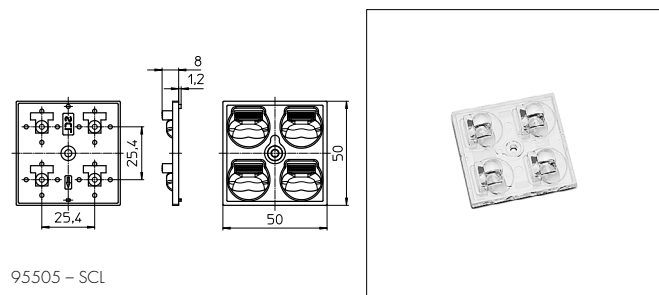
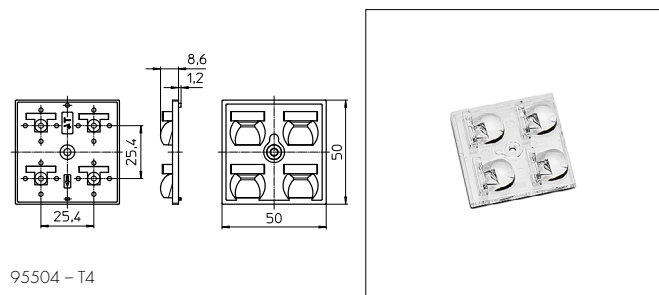
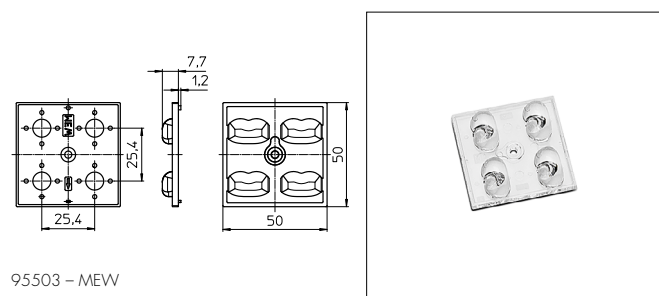
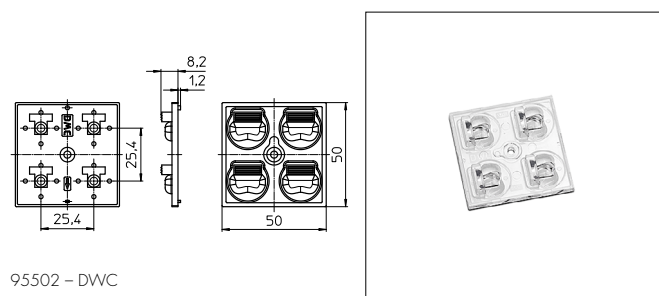
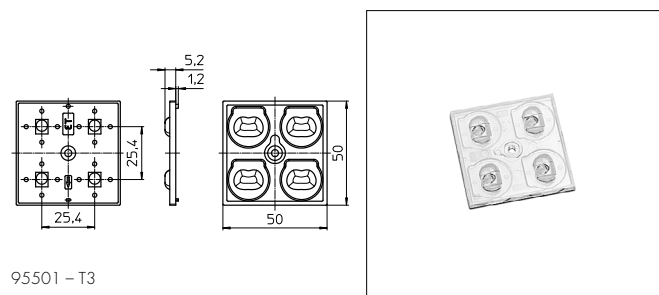
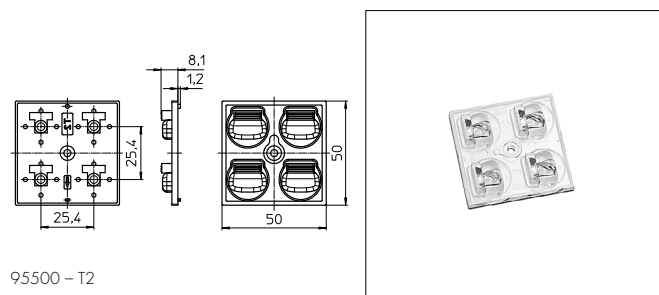
### Light Distribution Curves



The values contained in this data sheet can change due to technical innovations. Any such changes will be made without separate notification.

# Compact optics 2x2 for SMD W5

## Mechanical Dimensions



The values contained in this data sheet can change due to technical innovations. Any such changes will be made without separate notification.

## Shade for 2x2 optics Type 955

Shade for additional glare control.  
The shade can be mounted in any direction.

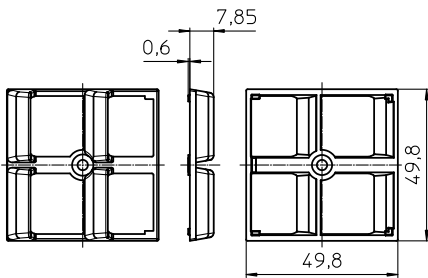
### Technical features

- Material: PC
- Dimensions (LxW): 50x50 mm
- Operating temperature range: - 40 °C to 80 °C
- Fixing hole for M3
- Max. torque on screws M3:  
0.5 Nm



Ref. No.	Type	Colour	Weight g	Packaging unit
572483	955	black	3.2	560

### Mechanical Dimensions



The values contained in this data sheet can change due to technical innovations. Any such changes will be made without separate notification.