

FIXING CLIPS AND EXPANDING RIVETS



FIXING CLIPS AND EXPANDING RIVETS

For screwless secure fixing of LED modules and optics

Fixing clips are available to enable quick and secure fixing of the LED board or also the LED board together with the optics in the luminaire casing.



Fixing clips and expanding rivets

- **SCREWLESS FIXATION**
- **FAST AND EASY MOUNTING**
- **HIGH QUALITY MATERIAL**

Fixing clips for LED PCBs

For screwless fastening of LED PCB to the luminaire sheet
The clamping range (MT) is a sum of PCB thickness (PCB)
+ luminaire sheet thickness (Metal sheet).

Material: PC, white (UL-94 V-2)

For PCB fixing hole diameter:

Ø 4.1–4.5 mm

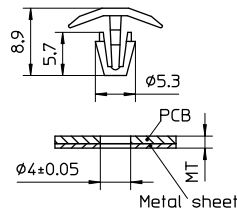
Clamping range (MT): 2.1–2.6 mm

Weight: 0.2 g

Packaging unit: 1000 pcs. (.11 = 10,000 pcs.)

Type: 98050

Ref. No.: 562870



562870

Material: PA, natural (UL-94 V-2)

Vibration resistant version

For PCB fixing hole diameter:

Ø 3.4 mm

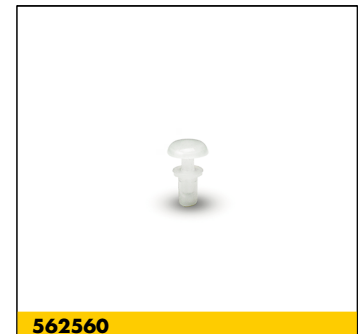
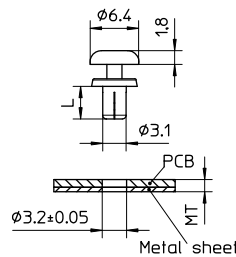
Clamping range (MT): 2–2.8 mm

Weight: 0.2 g

Packaging unit: 1000 pcs.

Type: 98010

Ref. No.: 562560



562560

Material: metal clip with silicone pad

For PCB fixing hole: 4.3–4.8 mm

Cut-out to luminaire sheet: 3.7x3.7 mm

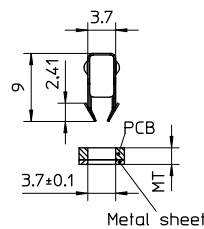
Clamping range (MT): 1.5–3.6 mm

Weight: 0.2 g

Packaging unit: 2000 pcs.

Type: 99000

Ref. No.: 558363



558363

The values contained in this data sheet can change due to technical innovations. Any such changes will be made without separate notification.

Fixing expanding rivets for optics or covers together with the LED PCB

For screwless fastening of optics or covers together with the LED PCB to the luminaire sheet

Vibration resistant version

Material: PA, natural or white (UL-94 V-2)

For PCB fixing hole diameter: \varnothing 3.4 or 4.3 mm

The clamping range (MT) for optics is a sum of PCB thickness (PCB)

+ optics thickness (O) + luminaire sheet thickness (Metal sheet)

and for covers it is a sum of PCB thickness (PCB)

+ luminaire sheet thickness (Metal sheet)

Weight: 0.2 g

Packaging unit: 1000 pcs.

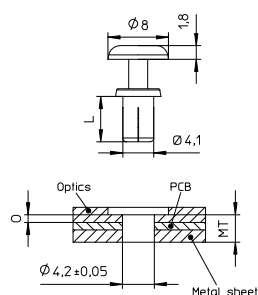


Type	Ref. No.	For clamping range (MT) mm	Length (L) mm	Fixing hole diameter mm	Color
98005	570529	1.7–2.5	4	4.2	natural
98004	569408	4.5–5.5	7	4.2	natural
98001	562557	5.5–6.5	8	4.2	natural
98002	562558	6.5–7.5	9	4.2	natural
98003	562559	7.5–8.5	10	4.2	natural
98011	574100	5.0–6.0	7.5	3.2	white

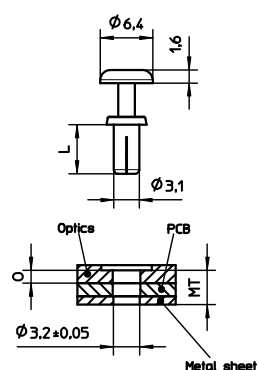
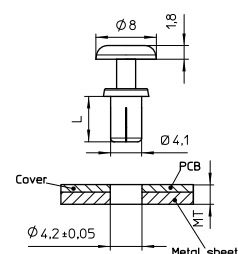
Material thickness of VS optics

Optics type	Material thickness (O) (mm)
963	2.4
988	4.6
994	3.5
995	4.55
914	2.85

For optics



For covers



The values contained in this data sheet can change due to technical innovations. Any such changes will be made without separate notification.