

TRACK ADAPTER UIT-3P



TRACK ADAPTER UIT-3P

570148, 571216

Typical Applications

For common 3-phase track systems

- Retail lighting



Track Adapter UIT-3P

- WITH PHASE SELECTOR SWITCH L1/L2/L3
- COMPATIBLE WITH DIFFERENT 3-PHASE TRACK SYSTEMS
- PRODUCT GUARANTEE: 2 YEARS

Track Adapter UIT-3P

Product features

- Adapter for common 3-phase track systems (Erco, Eutrac, Globaltrac, Iguzzini, Zumtobel)
- Integrated phase selector L1/L2/L3
- Material: PC, white or black

Electrical features

- Nominal rating: 3 A / 250 V
- IDC terminals: 0.5–0.75 mm² (AWG20–AWG18)

Safety features

- With earth connection
- Protection class I
- Two-sided locking for secure fixing in the track rail

Packaging units

Type	Packaging unit		
	Pieces per box	Boxes per pallet	Weight g
14937	23	1664	47

Reference numbers

Type: 14937

Ref. No.: 571216 black

Ref. No.: 570148 white



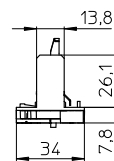
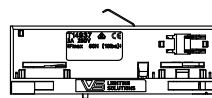
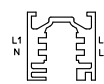
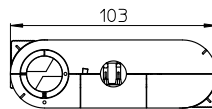
Applied standards

- EN 60570



Dimensions

- Casing: UIT-3P
- Length: 103 mm
- Width: 34 mm
- Height: 33.9 mm (visible 7.8 mm)



Retaining collars for luminaire heads

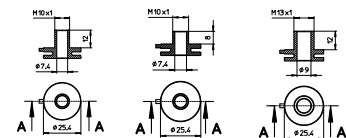
Material: aluminium

350° rotatable

Ref. No.: 570360 M10x1, length: 12 mm

Ref. No.: 570955 M10x1, length: 8 mm

Ref. No.: 570361 M13x1, length: 12 mm



Hand insertion tooling VS for IDC terminals

Attachment for screwdriver Ø 5.8 mm

Material: plastics

Ref. No.: 109480



The values contained in this data sheet can change due to technical innovations. Any such changes will be made without separate notification.

Assembly and Safety Information

Installation must be carried out under observation of the relevant regulations and standards. Installation must be carried out in a voltage-free state (i.e. disconnection from the mains). The following advices must be observed, non-observance can result in the destruction, fire and/or other hazards.

Mandatory regulations

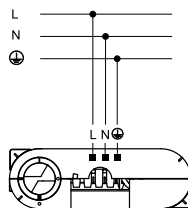
- DIN VDE 0100
- EN 60598-1

Mechanical mounting

- Mounting position and location:
 - Common track system; for vertical wall mounting an additional component must be used to prevent the sliding of the adapter in the rail.
- 3-phase option: 3 phases are selectable with a rotary switch
- Degree of protection: IP20
- Inserting into rail: The track adapter has two rotatable locking devices at the current collector shaft and on the opposite side. By actuating the rotary locking device the adapter is locked securely in the rail.
- Load vertical: max. up to 50 N
- Torque on extension arm: 2 Nm

Electrical installation

- Connection terminals: IDC terminals for rigid or flexible conductors with a section of 0.5–0.75 mm² (AWG20–AWG18), insulation diameter: max. 2.75 mm
- Electrical connection: Hand insertion tooling VS (attachment for screwdriver Ø 5.8 mm) Ref. No.: 109480
- Through-wiring: Is not allowed.
- Wiring diagram: For luminaire connection



The values contained in this data sheet can change due to technical innovations. Any such changes will be made without separate notification.