

EMERGENCY LIGHTING DEVICES FOR LED APPLICATIONS



ELECTRONIC EMERGENCY LIGHTING DEVICES FOR LED APPLICATIONS

For nominal operating periods of 1 hour or 3 hours

Emergency lighting systems spring to life any time normal main lighting systems fail. Emergency lighting is designed to ensure that staff can safely leave any rooms and that there is sufficient lighting to illuminate rescue paths/routes as well as to avoid panic situations.

VS emergency lighting devices are designed for use with LED applications and can be operated as part of a combined system with electronic LED drivers.

VS emergency lighting devices test the presence of and the charge left on batteries during regular cycles and display the existing status via a bi-colour LED (self-testing function). This both simplifies battery maintenance and ensures necessary emergency lighting in the event of a mains power cut. During normal operation, the batteries are recharged with mains power.



Emergency Lighting Modules for 3 Hours Operating Time

50, 130 und 220 V voltage output

VS emergency lighting modules are suitable for LED luminaires.

Ambient temperature: 5 to 50 °C

Electrical characteristics

Power consumption: 4 VA

Constant output: > 3 W

Weekly automatic self-diagnosis

and daily testing of system status

Battery charge is checked during regular testing cycles.

Optical status display via two-colour LED

Connection details

Mains voltage: 220–240 V ± 10%

Mains frequency: 50–60 Hz

LED emergency light devices must be connected in line with the installation manual.

Technical notes – Rechargeable batteries

Choice of rechargeable battery depends on the operating device.

Charging time of rechargeable batteries: max. 24 hrs.

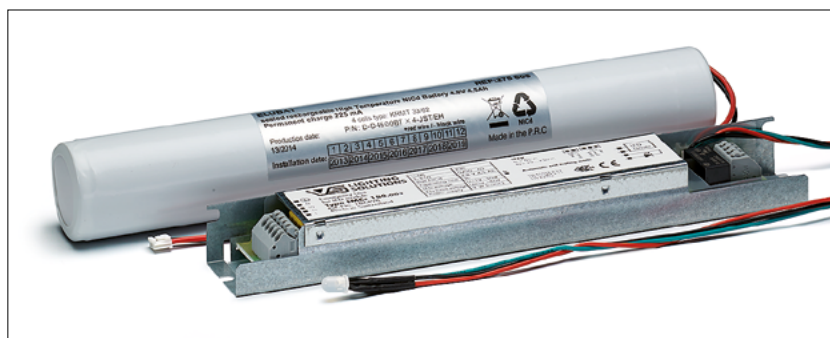
Rechargeable batteries: nickel-cadmium (NiCd)

Safety features

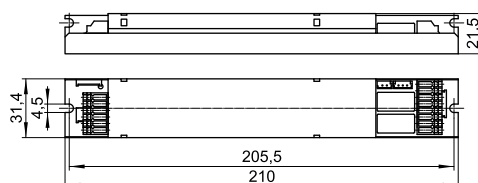
Protection class I

Degree of protection: IP20

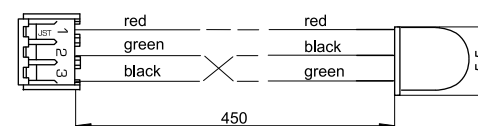
SELV (186498)



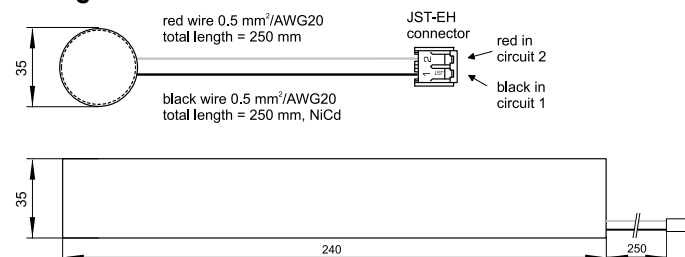
M5.1



LED



Rechargeable batteries



Type	Ref. No. EL Module	Ref. No. Battery	Battery type	Nominal operating period (hrs.)	Mains current at 230 V (mA)	Current output (mA)	Voltage output (V)	Weight (g) EL Module	Battery
M5.1 – Dimensions EL module: 210x31.4x21.5 mm									
EMCc 180.003	186498	188824	4.8V/4.5Ah	3	22	250–60	12–50	145	490
EMCc 180.004	186499	188824	4.8V/4.5Ah	3	22	150–23	20–130	145	490
EMCc 180.005	186500	188824	4.8V/4.5Ah	3	22	100–13	100–220	145	490

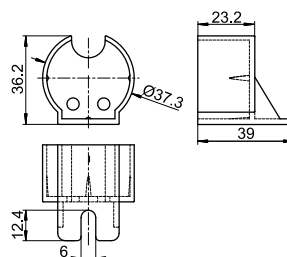
Holders for rechargeable batteries for emergency LED lighting modules

It is recommended to use two holders per rechargeable battery to ensure optimum hold.

Material: PBT

For rechargeable battery type: 4.8V/4.5Ah NiCd

Ref. No.: 188828



The values contained in this data sheet can change due to technical innovations. Any such changes will be made without separate notification.

Emergency Lighting Modules for 1 Hour Operating Time

50, 130 und 220 V voltage output

VS emergency lighting modules are suitable for LED luminaires.

Ambient temperature: 5 to 50 °C

Electrical characteristics

Power consumption: 3.5 VA

Constant output: > 3 W

Weekly automatic self-diagnosis

and daily testing of system status

Battery charge is checked during regular testing cycles.

Optical status display via two-colour LED

Connection details

Mains voltage: 220–240 V ± 10 %

Mains frequency: 50–60 Hz

LED emergency light devices must be connected in line with the installation manual.

Technical notes – Rechargeable batteries

Choice of rechargeable battery depends on the operating device.

Charging time of rechargeable batteries: max. 24 hrs.

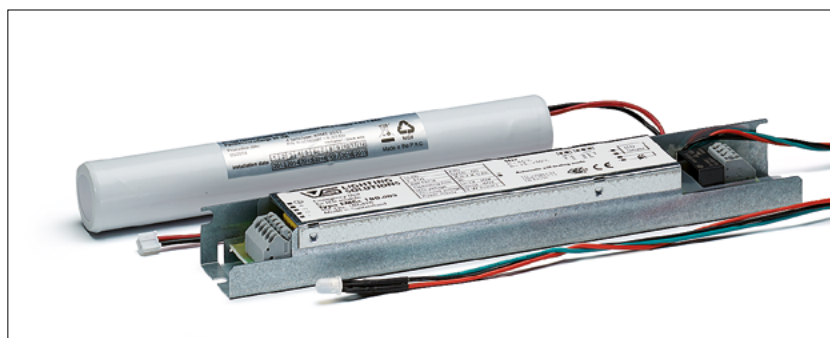
Rechargeable batteries: nickel-cadmium (NiCd)

Safety features

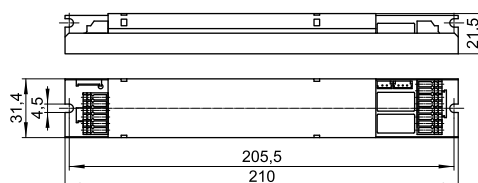
Protection class I

Degree of protection: IP20

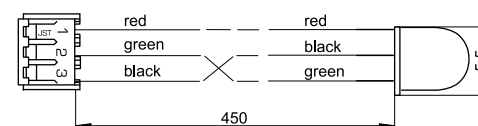
SELV (186495)



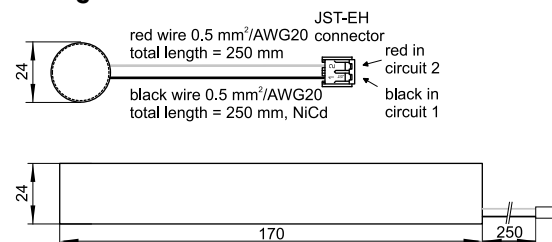
M5.1



LED



Rechargeable batteries



Type	Ref. No. EL Module	Ref. No. Battery	Battery type	Nominal operating period (hrs.)	Mains current at 230 V (mA)	Current output (mA)	Voltage output (V)	Weight (g) EL Module	Battery
M5.1 – Dimensions (LxWxH): 210x31.4x21.5 mm									
EMCc 60.000	186495	188823	4.8V/1.8Ah	1	16	250–60	12–50	145	200
EMCc 60.001	186496	188823	4.8V/1.8Ah	1	16	150–23	20–130	145	200
EMCc 60.002	186497	188823	4.8V/1.8Ah	1	16	100–13	100–220	145	200

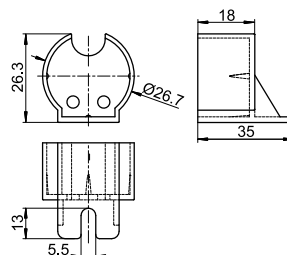
Holders for rechargeable batteries for emergency LED lighting modules

It is recommended to use two holders per rechargeable battery to ensure optimum hold.

Material: PC

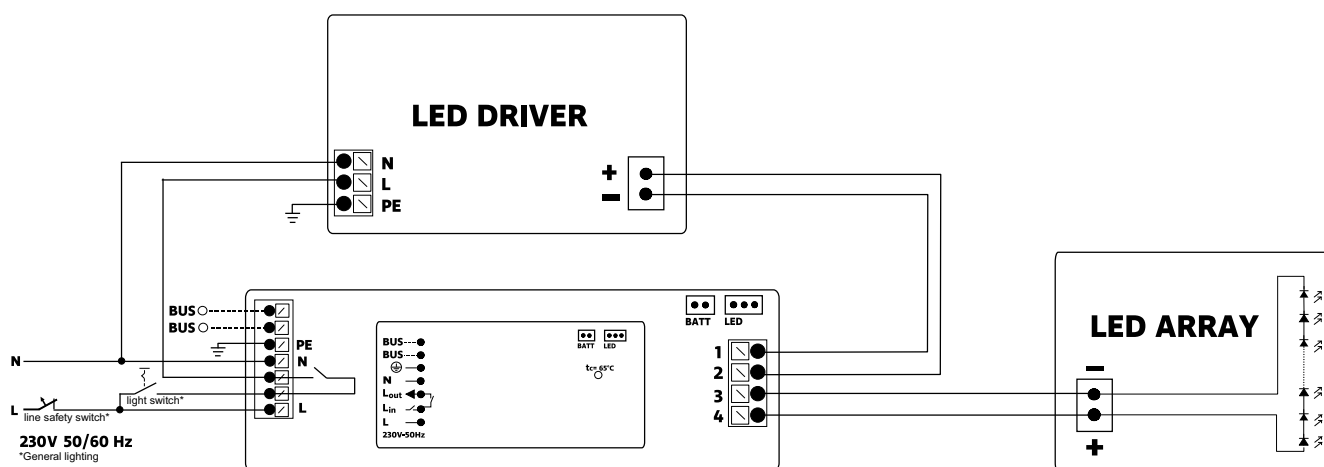
For rechargeable battery type: 4.8V/1.8Ah NiCd

Ref. No.: 188827



The values contained in this data sheet can change due to technical innovations. Any such changes will be made without separate notification.

Emergency Lighting – Connection Example



The values contained in this data sheet can change due to technical innovations. Any such changes will be made without separate notification.