

LEDSPOTS

MISTER 11 - Gen. 2



NEW LED SPOT ENGINES WITH DEFINED SPOTLIGHT

This new LEDSpot-Engine offers a brilliant defined spotlight with comparable light output of MR11 halogen lamps and that with reduced glare in a very small package.

Typical applications for LEDSpots

Integration in luminaires

- Residential lighting
- Retail lighting
- Museum lighting



MisteR11 - Gen. 2

- **MODULAR SYSTEM: ENGINE + FLANGE**
- **NARROW COLOUR TOLERANCES:
3 STEP MACADAM**
- **COLOUR RENDERING INDEX: CRI 90**
- **LUMINOUS FLUX: UP TO 815 LM**
- **MADE IN ITALY**



LED Engines for Mister11 - Gen. 2

LEDSpot engine equipped with LED module, holder, thermal pad, heat sink, reflector and leads but without flange

Technical notes

Flange: Ø 35 mm
COB PCB material: aluminium
Heatsink material: thermoconductive resin (A – 200 mA)
or aluminium (version 350 mA)
Max. operating temperature at t_c point: 70 °C (A – 200 mA)
or 75 °C (B – 350 mA)
Lumen maintenance: L70/B50;
> 200.000 hrs. at max. allowed operation current
65 °C (A – 200 mA) or 70 °C (B – 350 mA) at t_p point
Temperature depends on installation situation and
has to be checked by the luminaire manufacturer.
Colour accuracy initially: 3 SDCM
Plastic clear cover to protect the reflector
(diffuse cover on request)
Leads: Cu tinned, stranded conductors 0.5 mm²,
length: 200 mm, stripped lead ends (with plug on request)
With integrated cord grip



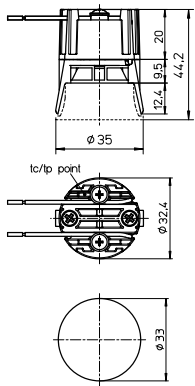
Maximum ratings

Exceeding the maximum ratings can lead to reduction of service life or destruction of the modules.

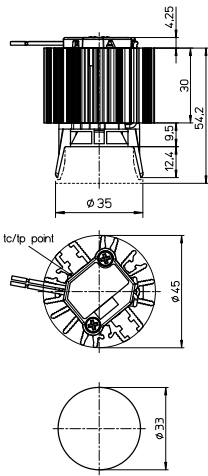
Type	Ambient temperature range (t_a)		Operation temp. at t_c point with max. current		Storage temperature range		Max. allowed repetitive peak current mA
	°C min.	°C max.	°C min.	°C max.	°C min.	°C max.	
A – 200 mA	-20	+45	-25	+70	-40	+90	500
B – 350 mA	-20	+45	-25	+75	-40	+90	1000

Temperatures depend on installation situation and has to be checked by the luminaire manufacturer.

A – Engine 200 mA



B – Engine 350 mA



The values contained in this data sheet can change due to technical innovations. Any such changes will be made without separate notification.

LED Engines for Mister11 - Gen. 2

Electrical characteristics

Type	100 mA		200 mA		300 mA		350 mA	
	P _{el} (W)	V _f (V)	P _{el} (W)	V _f (V)	P _{el} (W)	V _f (V)	P _{el} (W)	V _f (V)
E.Mister11 200 (drawing A)	1.57	15.7	3.22	16.1	—	—	—	—
E.Mister11 350 (drawing B)	—	—	—	—	4.95	16.5	5.81	16.6

Voltage and power tolerance: ± 10%

Optical characteristics

at T_p 65 °C

Type	Ref. No.	Colour	Correlated colour temperature K	Typ. luminous flux and efficiency at				CRI
				100 mA		200 mA		
				lm	lm/W	lm	lm/W	R _a
LEDSpot Engine Mister11 up to 200 mA – Drawing A				P _{el} =1.57W / V _f = 15.7V		P _{el} =3.22W / V _f = 16.1V		
E.Mister 11 200 - 927	573487	warm white	2700	225	143	435	135	90
E.Mister 11 200 - 930	573488	warm white	3000	235	150	455	141	90
E.Mister 11 200 - 940	573693	neutral white	4000	250	159	485	151	90

Production tolerance of luminous flux and efficiency: ± 10%

Type	Ref. No.	Colour	Correlated colour temperature K	Typ. luminous flux and efficiency at				CRI
				300 mA		350 mA		
				lm	lm/W	lm	lm/W	R _a
LEDSpot Engine Mister11 up to 350 mA – Drawing B				P _{el} =4.95W / V _f = 16.5V		P _{el} =5.81W / V _f = 16.6V		
E.MisteR 11 350 - 927	on request*	warm white	2700	640	129	740	127	90
E.MisteR 11 350 - 930	on request*	warm white	3000	670	135	770	133	90
E.MisteR 11 350 - 940	on request*	neutral white	4000	710	143	815	140	90

Production tolerance of luminous flux and efficiency: ± 10%

Flange for LED Engines Mister11 - Gen. 2

Technical notes

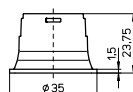
For click-in fixation on holder

Diameter: 35 mm

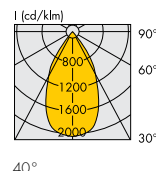
Operating temperature: -25 to 90 °C

Storage temperature: -40 to 90 °C

Plastic clear cover to protect the reflector



Flange	Ref. No.	Beam angle (°)	Cover	Optical efficiency (%)	Weight g
Black with transparent cover	570352	40	Clear	60	5
White with transparent cover	xxxxx	—	—	—	5



The values contained in this data sheet can change due to technical innovations. Any such changes will be made without separate notification.

LED Engines for Mister11 - Gen. 2

LED Drivers

You will find more information about our LED drivers on our website: www.vossloh-schwabe.com

Capacity range (W)		Output current DC	Output voltage DC	Mains voltage (V)	Ref. No.	Version	Current setting	Dimming	Max. service life		Dimensions (LxWxH)	For type	
min.	max.	mA	V	50-60 Hz					hrs.	at t _c °C	mm	200 mA	350 mA
350 mA													
1	12	350	9-42	220-240	187345	ComfortLine	DALI, DIP switch	DALI	100.000	70	85x40x22	x	x
2	21	500	10-42	220-240	187116	EasyLine	DIP switch	—	100.000	65	97x43x30	x	x
1	8.75	350	3-25	176-240	186519	ComfortLine	—	—	100.000	70	65x31x22	—	x

Please ensure you choose the correct LED driver for the module in question and that the respective output parameters (current, voltage, wattage) are correct.

The values contained in this data sheet can change due to technical innovations. Any such changes will be made without separate notification.



Packaging unit

Type	MOQ & shipping unit	Box dimensions (LxWxH) mm	Weight single (g)	Gross weight packaging unit (g)
E.MisteR 11 200	45	600x400x80	20	1420
E.MisteR 11 350	45	600x400x80	65	3450
Black with transparent cover	45	200x140x525	4.6	355

EPREL

E.MisteR 11 - Gen. 2 are containing Products of LED Modules

Light Source

Containing product Type	Powered by Gen. 8		
	Light Source Type	Reg.No.	EE Class
E.MisteR 11 - 927	BXRE-27G0800-D-8x	869189	F
E.MisteR 11 - 930	BXRE-30G0800-D-8x	869616	F
E.MisteR 11 - 940	BXRE-40G0800-D-8x	870295	F

Product guarantee

- 5 years
- The conditions for the Product Guarantee of the Vossloh-Schwabe Group shall apply as published on our homepage (www.vossloh-schwabe.com). We will be happy to send you these conditions upon request.

General safety and installation instructions

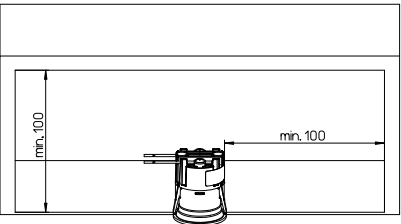
- VS product may only be installed and commissioned by authorised and fully qualified staff.
- These instructions must be carefully read before installing and commissioning the system, as this is the only way to ensure safe and correct handling.
- An external constant-current driver is required.
- Before any work is carried out on the equipment, it must be disconnected from the mains.
- All valid safety and accident-prevention regulations must be observed.
- The products should never be inexpertly opened. Repairs may only be undertaken by the manufacturer.

Built-in

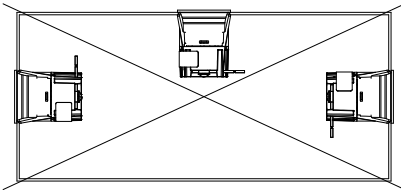
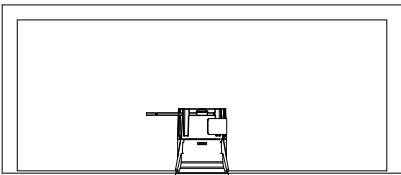
Correct position

Wrong position

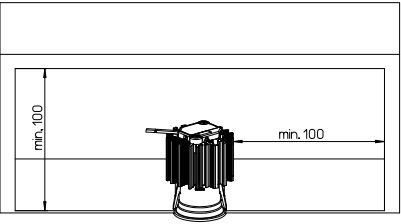
MisteR11 – 200



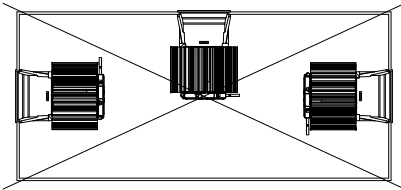
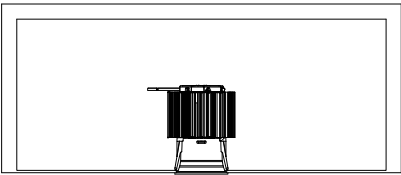
OK



MisteR11 – 350



OK



The values contained in this data sheet can change due to technical innovations. Any such changes will be made without separate notification.